

ABE Product Catalog

Camlock Fittings



CAMLOCK QUICK COUPLING

Type A

Male Adapter X Female

ALUMINIUM

1/2"
3/4"
1"
1-1/4"
1-1/2"
2-1/2"
3"
4"
5"
6"



Type C

Female Coupler X Hose Shank

ALUMINIUM

1/2"
3/4"
1"
1-1/4"
1-1/2"
2-1/2"
3"
4"
5"
6"



Type E

Male Adapter X Hose

ALUMINIUM

1/2"
3/4"
1"
1-1/4"
1-1/2"
2-1/2"
3"
4"
5"
6"



Type DC

Dust Cap

ALUMINIUM

1/2"
3/4"
1"
1-1/4"
1-1/2"
2-1/2"
3"
4"
5"
6"



Type B

Female Coupler X Male

ALUMINIUM

1/2"
3/4"
1"
1-1/4"
1-1/2"
2-1/2"
3"
4"
5"
6"



Type D

Female Coupler X Female

ALUMINIUM

1/2"
3/4"
1"
1-1/4"
1-1/2"
2-1/2"
3"
4"
5"
6"



Type F

Male Adapter X Male

ALUMINIUM

1/2"
3/4"
1"
1-1/4"
1-1/2"
2-1/2"
3"
4"
5"
6"



Type DP

Dust Plug

ALUMINIUM

1/2"
3/4"
1"
1-1/4"
1-1/2"
2-1/2"
3"
4"
5"
6"



CAMLOCK QUICK COUPLING

Type A

Male Adapter X Female

STAINLESS STEEL

| |
|--------|
| 1/2" |
| 3/4" |
| 1" |
| 1-1/8" |
| 1-1/2" |
| 2" |
| 2-1/2" |
| 3" |
| 4" |
| 6" |



Type C

Female Coupler X Hose Shank

STAINLESS STEEL

| |
|--------|
| 1/2" |
| 3/4" |
| 1" |
| 1-1/8" |
| 1-1/2" |
| 2" |
| 2-1/2" |
| 3" |
| 4" |
| 6" |



Type E

Male Adapter X Hose

STAINLESS STEEL

| |
|--------|
| 1/2" |
| 3/4" |
| 1" |
| 1-1/8" |
| 1-1/2" |
| 2" |
| 2-1/2" |
| 3" |
| 4" |
| 6" |



Type DC

Dust Cap

STAINLESS STEEL

| |
|--------|
| 1/2" |
| 3/4" |
| 1" |
| 1-1/8" |
| 1-1/2" |
| 2" |
| 2-1/2" |
| 3" |
| 4" |
| 6" |



Type B

Female Coupler X Male

STAINLESS STEEL

| |
|--------|
| 1/2" |
| 3/4" |
| 1" |
| 1-1/8" |
| 1-1/2" |
| 2" |
| 2-1/2" |
| 3" |
| 4" |
| 6" |



Type D

Female Coupler X Female

STAINLESS STEEL

| |
|--------|
| 1/2" |
| 3/4" |
| 1" |
| 1-1/8" |
| 1-1/2" |
| 2" |
| 2-1/2" |
| 3" |
| 4" |
| 6" |



Type F

Male Adapter X Male

STAINLESS STEEL

| |
|--------|
| 1/2" |
| 3/4" |
| 1" |
| 1-1/8" |
| 1-1/2" |
| 2" |
| 2-1/2" |
| 3" |
| 4" |
| 6" |



Type DP

Dust Plug

STAINLESS STEEL

| |
|--------|
| 1/2" |
| 3/4" |
| 1" |
| 1-1/8" |
| 1-1/2" |
| 2" |
| 2-1/2" |
| 3" |
| 4" |
| 6" |



CAMLOCK QUICK COUPLING

Type A

Male Adapter X Female

| BRASS | |
|--------|--|
| 1/2" | |
| 3/4" | |
| 1" | |
| 1-1/4" | |
| 1-1/2" | |
| 2" | |
| 2-1/2" | |
| 3" | |
| 4" | |
| 5" | |
| 6" | |



Type C

Female Coupler X Hose Shank

| BRASS | |
|--------|--|
| 1/2" | |
| 3/4" | |
| 1" | |
| 1-1/4" | |
| 1-1/2" | |
| 2" | |
| 2-1/2" | |
| 3" | |
| 4" | |
| 5" | |
| 6" | |



Type E

Male Adapter X Hose

| BRASS | |
|--------|--|
| 1/2" | |
| 3/4" | |
| 1" | |
| 1-1/4" | |
| 1-1/2" | |
| 2" | |
| 2-1/2" | |
| 3" | |
| 4" | |
| 5" | |
| 6" | |



Type DC

Dust Cap

| BRASS | |
|--------|--|
| 1/2" | |
| 3/4" | |
| 1" | |
| 1-1/4" | |
| 1-1/2" | |
| 2" | |
| 2-1/2" | |
| 3" | |
| 4" | |
| 5" | |
| 6" | |



Type B

Female Coupler X Male

| BRASS | |
|--------|--|
| 1/2" | |
| 3/4" | |
| 1" | |
| 1-1/4" | |
| 1-1/2" | |
| 2" | |
| 2-1/2" | |
| 3" | |
| 4" | |
| 5" | |
| 6" | |



Type D

Female Coupler X Female

| BRASS | |
|--------|--|
| 1/2" | |
| 3/4" | |
| 1" | |
| 1-1/4" | |
| 1-1/2" | |
| 2" | |
| 2-1/2" | |
| 3" | |
| 4" | |
| 5" | |
| 6" | |



Type F

Male Adapter X Male

| BRASS | |
|--------|--|
| 1/2" | |
| 3/4" | |
| 1" | |
| 1-1/4" | |
| 1-1/2" | |
| 2" | |
| 2-1/2" | |
| 3" | |
| 4" | |
| 5" | |
| 6" | |



Type DP

Dust Plug

| BRASS | |
|--------|--|
| 1/2" | |
| 3/4" | |
| 1" | |
| 1-1/4" | |
| 1-1/2" | |
| 2" | |
| 2-1/2" | |
| 3" | |
| 4" | |
| 5" | |
| 6" | |



CAMLOCK QUICK COUPLING

Type A

Male Adapter X Female

| PP |
|--------|
| 1/2" |
| 3/4" |
| 1" |
| 1-1/4" |
| 1-1/2" |
| 2" |
| 3" |
| 4" |



Type C

Female Coupler X Hose Shank

| PP |
|--------|
| 1/2" |
| 3/4" |
| 1" |
| 1-1/4" |
| 1-1/2" |
| 2" |
| 3" |
| 4" |



Type E

Male Adapter X Hose

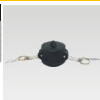
| PP |
|--------|
| 1/2" |
| 3/4" |
| 1" |
| 1-1/4" |
| 1-1/2" |
| 2" |
| 3" |
| 4" |



Type DC

Dust Cap

| PP |
|--------|
| 3/4" |
| 1" |
| 1-1/2" |
| 2" |
| 3" |
| 4" |



Type B

Female Coupler X Male

| PP |
|--------|
| 1/2" |
| 3/4" |
| 1" |
| 1-1/4" |
| 1-1/2" |
| 2" |
| 3" |
| 4" |



Type D

Female Coupler X Female

| PP |
|--------|
| 1/2" |
| 3/4" |
| 1" |
| 1-1/4" |
| 1-1/2" |
| 2" |
| 3" |
| 4" |



Type F

Male Adapter X Male

| PP |
|--------|
| 1/2" |
| 3/4" |
| 1" |
| 1-1/4" |
| 1-1/2" |
| 2" |
| 3" |
| 4" |



Type DP

Dust Plug

| PP |
|--------|
| 3/4" |
| 1" |
| 1-1/2" |
| 2" |
| 3" |
| 4" |



CAMLOCK QUICK COUPLING

Type A

Male Adapter X Female

| NYLON |
|--------|
| 1/2" |
| 3/4" |
| 1" |
| 1-1/4" |
| 1-1/2" |
| 2" |
| 3" |
| 4" |



Type B

Female Coupler X Male

| NYLON |
|--------|
| 1/2" |
| 3/4" |
| 1" |
| 1-1/4" |
| 1-1/2" |
| 2" |
| 3" |
| 4" |



Type C

Female Coupler X Hose Shank

| NYLON |
|--------|
| 1/2" |
| 3/4" |
| 1" |
| 1-1/4" |
| 1-1/2" |
| 2" |
| 3" |
| 4" |



Type D

Female Coupler X Female

| NYLON |
|--------|
| 1/2" |
| 3/4" |
| 1" |
| 1-1/4" |
| 1-1/2" |
| 2" |
| 3" |
| 4" |



Type E

Male Adapter X Hose

| NYLON |
|--------|
| 1/2" |
| 3/4" |
| 1" |
| 1-1/4" |
| 1-1/2" |
| 2" |
| 3" |
| 4" |



Type F

Male Adapter X Male

| NYLON |
|--------|
| 1/2" |
| 3/4" |
| 1" |
| 1-1/4" |
| 1-1/2" |
| 2" |
| 3" |
| 4" |



Type DC

Dust Cap

| NYLON |
|--------|
| 3/4" |
| 1" |
| 1-1/2" |
| 2" |
| 3" |
| 4" |



Type DP

Dust Plug

| NYLON |
|--------|
| 3/4" |
| 1" |
| 1-1/2" |
| 2" |
| 3" |
| 4" |



CAMLOCK QUICK COUPLING

AR Male Adapter X Female

SIZE

| |
|-----------|
| 2"x1-1/2" |
| 2"x3" |
| 3"x2" |
| 3"x4" |
| 4"x3" |
| 4"x6" |
| 6"x4" |



BR Female Coupler X Male

SIZE

| |
|-----------|
| 1-1/2"x1" |
| 2"x1-1/2" |
| 3"x2" |
| 3"x4" |
| 4"x3" |



DD Female Coupler X Female Coupler

SIZE

| |
|---------------|
| 1-1/2"x1-1/2" |
| 2" |
| 3" |
| 3"x4" |
| 4" |



DR Female Adapter X Female

SIZE

| |
|-----------|
| 1-1/2"x1" |
| 2"x1-1/2" |
| 3"x2" |
| 4"x3" |



FR Male Adapter X Male

SIZE

| |
|-----------|
| 2"x1-1/2" |
| 1-1/2"x3" |
| 2"x3" |
| 3"x1-1/2" |
| 3"x2" |
| 3"x4" |
| 4"x3" |
| 4"x6" |



CR Female Coupler X Hose Shank

SIZE

| |
|-----------|
| 2"x1-1/2" |
| 3"x2" |
| 3"x4" |
| 4"x3" |



SA Spool Adapter

SIZE

| | |
|-----------|-----------|
| 1" | 3"x4" |
| 1-1/4" | 4" |
| 1-1/2" | 4"x1-1/2" |
| 1-1/2"x2" | 4"x2" |
| 2" | 4"x6" |
| 2"x3" | 6" |
| 3" | |



DA Female Coupler x Male Adapter

SIZE

| | |
|-----------|-----------|
| 1-1/2"x1" | 3"x4" |
| 1-1/2"x2" | 4"x1-1/2" |
| 2"x1-1/2" | 4"x2" |
| 2"x3" | 4"x3" |
| 2"x4" | 4"x6" |
| 3"x1-1/2" | 6"x4" |
| 3"x2" | |



GUILLEMIN QUICK COUPLING

Hose Tail with Latch



Material: Aluminium Or Stainless Steel

| | |
|------|--------|
| SIZE | 1" |
| | 1-1/2" |
| | 2" |
| | 2-1/2" |
| | 3" |
| | 4" |

Female without Latch



Material: Aluminium Or Stainless Steel

| | |
|------|--------|
| SIZE | 1" |
| | 1-1/2" |
| | 2" |
| | 2-1/2" |
| | 3" |
| | 4" |

Male without Latch



Material: Aluminium Or Stainless Steel

| | |
|------|--------|
| SIZE | 1" |
| | 1-1/2" |
| | 2" |
| | 2-1/2" |
| | 3" |
| | 4" |

Cap+Latch+Chain



Material: Aluminium Or Stainless Steel

| | |
|------|--------|
| SIZE | 1" |
| | 1-1/2" |
| | 2" |
| | 2-1/2" |
| | 3" |
| | 4" |

Head (Big+Small) with Latch



Material: Aluminium Or Stainless Steel

| | |
|------|-----------------|
| SIZE | 2" x 3" |
| | 2" x 2-1/2" |
| | 2" x 2" |
| | 1-1/2" x 3" |
| | 1-1/2" x 2-1/2" |
| | 1-1/2" x 2" |
| | 1" x 3" |
| | 1" x 2-1/2" |
| | 1" x 2" |
| | 3/4" x 4" |
| | 3/4" x 3" |

Female with Latch



Material: Aluminium Or Stainless Steel

| | |
|------|--------|
| SIZE | 1" |
| | 1-1/2" |
| | 2" |
| | 2-1/2" |
| | 3" |
| | 4" |

Male with Latch



Material: Aluminium Or Stainless Steel

| | |
|------|--------|
| SIZE | 1" |
| | 1-1/2" |
| | 2" |
| | 2-1/2" |
| | 3" |
| | 4" |

AIR HOSE COUPLING (U.S. TYPE)

Universal Hose end



Material: Cast Iron Or Malleable Steel

| | |
|------|------|
| SIZE | 1/4" |
| | 3/8" |
| | 1/2" |
| | 3/4" |
| | 1" |

Universal Male end



Material: Cast Iron Or Malleable Steel

| | |
|------|------|
| SIZE | 1/4" |
| | 3/8" |
| | 1/2" |
| | 3/4" |
| | 1" |

Universal Female end



Material: Cast Iron Or Malleable Steel

| | |
|------|------|
| SIZE | 1/4" |
| | 3/8" |
| | 1/2" |
| | 3/4" |
| | 1" |

Universal Hose end



Material: Cast Iron Or Malleable Steel

| | |
|------|--------|
| SIZE | 1-1/4" |
| | 1-1/2" |
| | 2" |

Universal Female end



Material: Cast Iron Or Malleable Steel

| | |
|------|--------|
| SIZE | 1-1/4" |
| | 1-1/2" |
| | 2" |

AIR HOSE COUPLING (European TYPE)

Universal Hose end



Material: Cast Iron Or Malleable Steel

| | |
|------|------|
| SIZE | 1/4" |
| | 3/8" |
| | 1/2" |
| | 3/4" |
| | 1" |

Universal Male end



Material: Cast Iron Or Malleable Steel

| | |
|------|------|
| SIZE | 1/4" |
| | 3/8" |
| | 1/2" |
| | 3/4" |
| | 1" |

Universal Female end



Material: Cast Iron Or Malleable Steel

| | |
|------|------|
| SIZE | 1/4" |
| | 3/8" |
| | 1/2" |
| | 3/4" |
| | 1" |

AIR HOSE COUPLING (European TYPE)

Universal Hose end



Universal Male end



Universal Female end



Materia] BRASS

| | |
|------|--------|
| SIZE | 3/8" |
| | 1/2" |
| | 3/4" |
| | 1" |
| | 1-1/4" |

Materia] BRASS

| | |
|------|--------|
| SIZE | 3/8" |
| | 1/2" |
| | 3/4" |
| | 1" |
| | 1-1/4" |

Materia] BRASS

| | |
|------|--------|
| SIZE | 3/8" |
| | 1/2" |
| | 3/4" |
| | 1" |
| | 1-1/4" |

2 & 4 bolt clamp



| | | |
|-------|--------|-------------------|
| B-4 | 1/2" | 15/16"-1-1/16" |
| B-5 | 1/2" | 1-1/16"-1-3/16" |
| B-9 | 3/4" | 1-5/16"-1-1/2" |
| BU-9 | 3/4" | 1-3/16"-1-5/16" |
| B-10 | 3/4" | 1-1/2"-1-1/16" |
| B-14 | 1" | 1-11/16"-1-15/16" |
| BU-14 | 1" | 1-17/32"-1-23/32" |
| B-15 | 1" | 1-15/16"-2-1/8" |
| B-19 | 1-1/4" | 2-1/8"-2-6/8" |
| BU-24 | 1-1/2" | 2-3/32"-2-9/32" |
| BU-29 | 2" | 2-1/2"-2-25/32" |
| B-34 | 2-1/2" | 3-1/2"-3-15/16" |
| BU-34 | 2-1/2" | 3-3/32"-3-7/16" |
| B-35 | 3" | 3-13/16"-4-1/16" |

3-WAY



BLANK END



STORZ COUPLING

Female

| SIZE |
|--------|
| 1/2" |
| 3/4" |
| 1" |
| 1-1/2" |
| 2" |
| 2-1/2" |
| 3" |
| 4" |
| 5" |



Male

| SIZE |
|--------|
| 1/2" |
| 3/4" |
| 1" |
| 1-1/2" |
| 2" |
| 2-1/2" |
| 3" |
| 4" |
| 5" |



Hose End

| SIZE |
|--------|
| 1/2" |
| 3/4" |
| 1" |
| 1-1/2" |
| 2" |
| 2-1/2" |
| 3" |
| 4" |
| 5" |



Sealed Cap

| SIZE |
|--------|
| 1/2" |
| 3/4" |
| 1" |
| 1-1/2" |
| 2" |
| 2-1/2" |
| 3" |
| 4" |
| 5" |



BAUER COUPLING



It Includes Male,Spanner,Female,Gasket

| Material:Galvanized Steel |
|---------------------------|
| 2" |
| 3" |
| 3-1/2" |
| 4" |
| 6" |
| 8" |
| 10" |

HOSE CLAMP



American worm-drive clamp

(Band width: 8mm and 12.7mm)

| | | |
|---------|---------|-----------|
| 6-13mm | 19-44mm | 78-101mm |
| 6-16mm | 29-51mm | 91-114mm |
| 11-20mm | 34-57mm | 95-127mm |
| 13-23mm | 40-64mm | 100-140mm |
| 16-25mm | 46-70mm | 110-150mm |
| 16-32mm | 53-76mm | |
| 21-38mm | 72-90mm | |



Germany Type clamp

(Band width: 9mm and 12.7mm)

| | | |
|---------|----------|-----------|
| 9-13mm | 31-48mm | 104-127mm |
| 13-16mm | 38-54mm | 127-146mm |
| 13-19mm | 44-60mm | 146-159mm |
| 16-22mm | 50-70mm | 149-178mm |
| 19-25mm | 60-80mm | 175-203mm |
| 22-29mm | 70-90mm | 200-229mm |
| 25-35mm | 83-102mm | 225-254mm |
| 28-41mm | 95-115mm | 251-281mm |



Superior clamp

Material: Zn-plated steel and Stainless steel

| | |
|--------|----------|
| D17-19 | D86-91 |
| D20-22 | D92-97 |
| D23-25 | D98-103 |
| D26-28 | D104-112 |
| D29-31 | D113-121 |
| D32-35 | D122-130 |
| D36-39 | D131-139 |
| D40-43 | D140-148 |
| D44-47 | D149-161 |
| D48-51 | D162-174 |
| D52-55 | D175-187 |
| D56-59 | D188-200 |
| D60-63 | D201-213 |
| D64-67 | D214-226 |
| D68-73 | D227-239 |
| D74-79 | D240-252 |
| D80-85 | |



HOSE CLAMP

Double-bolt clamp



| Size | Clamp Range (Min) | Clamp Range (Max) |
|---------|-------------------|-------------------|
| SL-22 | 21/32" | 7/8" |
| SL-29 | 7/8" | 1-9/64" |
| SL-34 | 1-5/32" | 1-11/32" |
| SL-40 | 1-5/16" | 1-19/32" |
| SL-49 | 1-5/8" | 1-15/16" |
| SL-60 | 1-7/8" | 2-3/8" |
| SL-76 | 2-3/8" | 3-7/16" |
| SL-94 | 3-1/2" | 3-11/16" |
| SL-115 | 3-3/4" | 4-1/2" |
| SL-400 | 3-1/2" | 4" |
| SL-463 | 4-1/16" | 4-5/8" |
| SL-525 | 4-11/16" | 5-1/4" |
| SL-550 | 5" | 5-1/2" |
| SL-600 | 5-5/16" | 6-1/6" |
| SL-675 | 6-1/8" | 6-7/8" |
| SL-769 | 6-15/16" | 7-5/8" |
| SL-818 | 7-11/16" | 8-3/16" |
| SL-875 | 8-1/4" | 8-7/8" |
| SL-988 | 8-15/16" | 9-7/8" |
| SL-1125 | 9-15/16" | 11-3/8" |
| SL-1275 | 11-3/16" | 13" |

Double-wire hose clamp



Material: Stainless Steel/Carbon Steel

SPIRAL CLAMP

Material: Steel (Plated Zn)

| |
|--------|
| 1-1/2" |
| 2" |
| 2-1/2" |
| 3" |
| 4" |
| 5" |
| 6" |
| 8" |
| 10" |
| 12" |



PIPE CLAMP



| | |
|-------|--------|
| 1/4" | 1-1/4" |
| 5/16" | 1-1/2" |
| 3/8" | 2" |
| 1/2" | 2-1/2" |
| 5/8" | 2-3/4" |
| 3/4" | 3" |
| 7/8" | 4" |
| 1" | |

HOSE TO HOSE



| |
|--------------|
| 1/8"X20-1/4" |
| 1/4"X38" |

PIPE FITTING

PIN LUG

| SIZE | |
|------|--------|
| | 1" |
| | 1-1/4" |
| | 1-1/2" |
| | 2" |
| | 3" |



SHORT SHANK FITTING

| Material BRASS | |
|----------------|------|
| | 1/2" |
| | 5/8" |
| | 3/4" |
| | 1" |



NYLON COUPLING

MHE

| SIZE | |
|-------|---------------|
| MHE-1 | 3/4" X 50mm |
| MHE-2 | 1" X 50mm |
| MHE-3 | 1-1/4" X 50mm |



HE

| SIZE | |
|------|-----------------|
| HE-1 | 3/4" X 1-1/4" |
| HE-2 | 1" X 1" |
| HE-3 | 1-1/4" X 1-1/4" |

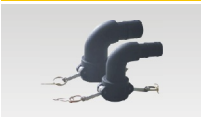


Q

| SIZE | |
|------|---------------|
| Q1 | 3/4" X 50mm |
| Q2 | 1" X 50mm |
| Q3 | 1-1/4" X 50mm |



PP Camlock 90° Degree





PIPE FITTING

STRAINER

| Material: Galvanized Steel |
|----------------------------|
| 1" |
| 1-1/2" |
| 2" |
| 2-1/2" |
| 3" |
| 4" |
| 6" |
| 8" |



K.C. NIPPLE & HOSE MENDER

| Material: Galvanized Steel / Stainless Steel / Brass | |
|--|-----|
| 1/2" | 3" |
| 3/4" | 4" |
| 1" | 5" |
| 1-1/4" | 6" |
| 1-1/2" | 8" |
| 2" | 10" |
| 2-1/2" | 12" |



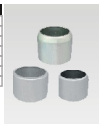
MALE PIPE STEM ONLY

| Material: Galvanized Steel |
|----------------------------|
| 1/2" |
| 3/4" |
| 1" |
| 1-1/4" |
| 1-1/2" |
| 2" |
| 2-1/2" |
| 3" |
| 4" |
| 5" |
| 6" |



FERRULES

| Material: Galvanized Steel / Stainless Steel |
|--|
| 1" |
| 1-1/2" |
| 2" |
| 2-1/2" |
| 3" |
| 4" |
| 6" |



SPANNER-A



SPANNER-B



SPANNER-C



CAMLOCK PARTS

Storz Gasket

SIZE

| |
|--------|
| 1/2" |
| 3/4" |
| 1" |
| 1-1/2" |
| 2" |
| 2-1/2" |
| 3" |
| 4" |
| 5" |



CAMLOCK GASKET

Material: NBR, EPDM, Viton

| |
|--------|
| 1" |
| 1-1/2" |
| 2" |
| 2-1/2" |
| 3" |
| 4" |
| 6" |



PIN

Material: ALUMINUM, STAINLESS STEEL, CARBON STEEL

| |
|------|
| 3/4" |
| 1" |
| 2" |
| 3" |
| 6" |



HANDLE

Material: STAINLESS STEEL OR BRASS

| |
|------|
| 3/4" |
| 1" |
| 2" |
| 3" |
| 6" |



SAFETY PIN



CHAIN



Material: Stainless Steel
Carbon Steel

CAMLOCK WITH FLANGE



ABE Anboer Industrial

Contact Us For a Quotation

email: sales@anboerqd.com

visit our website: www.anboerqd.com

visit us on Instagram: [@anboerqd](https://www.instagram.com/anboerqd)

We offer high quality industrial and hydraulic products at a competitive price and lead time. Please contact us for all of your product requirements, such as hoses, fittings, o-ring kits, cylinders, pumps, and valves. Ask about our product warranties and special offers!